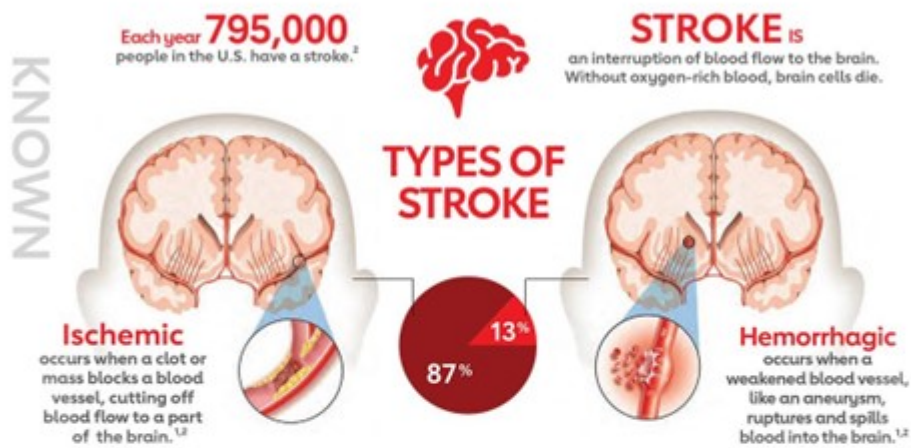


# Strokes- Signs and Emergency Response

## Picture This



**FINDING THE CAUSE** of a stroke is important because it helps reduce the risk of another stroke.

**POSSIBLE HIDDEN CAUSES**



**Irregular heartbeat (Atrial Fibrillation)**  
AFib patients are at a **5X** greater risk for stroke.<sup>1</sup>

**Heart structure problem** (such as Patent Foramen Ovale)  
**Hardening of the arteries** (Large Artery Atherosclerosis)  
**Blood clotting disorder** (Thrombophilia)

**UNKNOWN**

FIND THE FACTS at [Stroke.org/CS](http://Stroke.org/CS)

**Medtronic**

Supports the American Stroke Association's Cryptogenic Stroke Initiative.

1 - Benjamin EJ, et al. Circulation. 2019;139:e56-e528.

2 - Benjamin EJ, Blaha MJ, Chiuve SE, et al. on behalf of the AHA Statistics Committee and SS Subcommittee. Heart disease and stroke statistics—2017 update: a report from the AHA. Circulation. 2017;135:e229-e445.

3 - Saver, JL. Cryptogenic Stroke. N Engl J Med 2016;374:2065-74.

Source: <https://www.stroke.org>